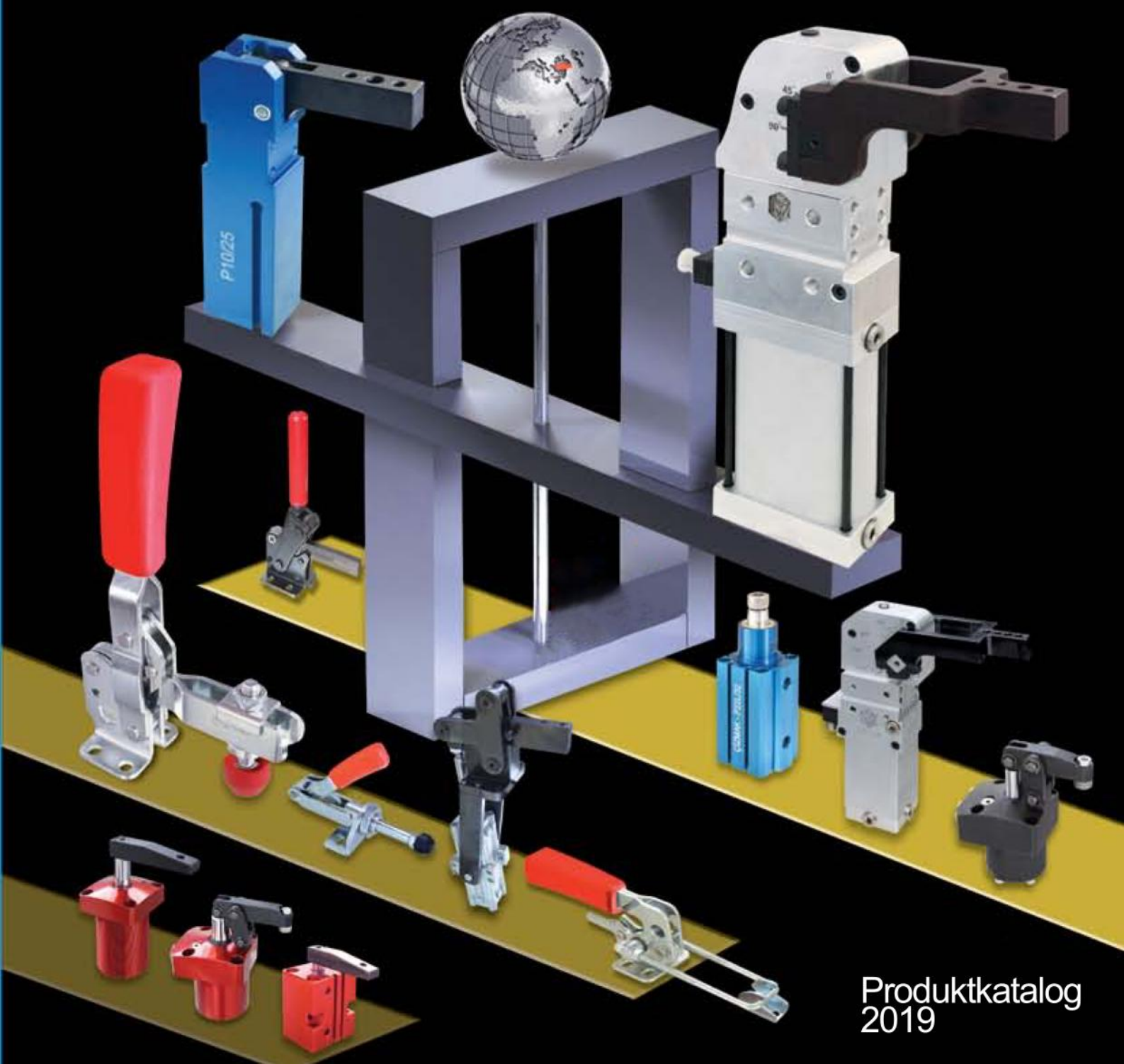


DESETEC SPANNTÉCHNIK

P-Serie Pneumatische Spannelemente
- Pneumatikspanner-Kraftspanner



P50 Pneumatischer Kniehebelspanner – vertikaler Zylinderanbau

P50

Pneumatic toggle clamp with vertical cylinder.

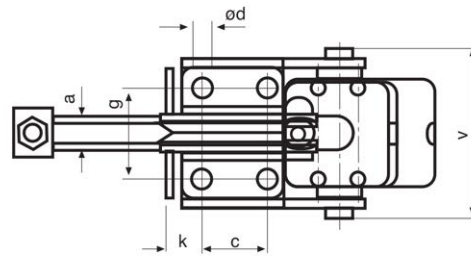
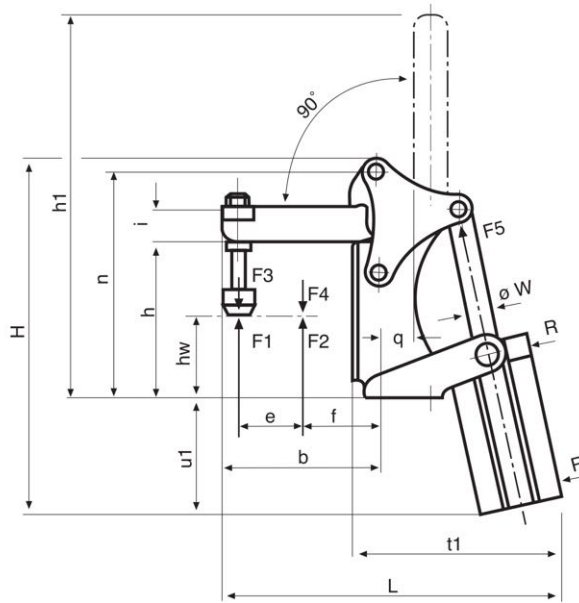
Space-saving angled form. Can be mounted vertically or horizontally. Fitted with pneumatic cylinder, double-acting, replaceable.

Magnetic piston for end-position monitoring. Adjustable speed.

Clamp are galvanized and passivated. Stainless steel rivets running in case-hardened bushes.

Bearings are pre-lubricated.

Complete with tempered, galvanized clamping screw MS10/20 ve MS10Z



Größe Size	F1 (kN)	F2 (kN)	F3* (kN)	F4 (kN)	F5 (kN)	Vn**				
2	1.0	1.2	0.7	1.0	0.30	0.26	170	130	M6 x 35	800
3	1.4	2.5	0.6	1.1	0.50	0.35	205	160	M8 x 45	1100
4	2.0	3.0	1.5	2.2	0.75	0.08	260	220	M8 x 65	1600

*F3 = F4 = Max. Haltekraft bei 6 / Max. Holding capacity at 6 bar
**Vn = Luftverbrauch pro Doppelhub bei 6 bar (dm³) / Air consumption per double stroke at 6 bar (dm³)

Größe Size	a	b	c	ød	e	f	g	h	h1	h3	h4	h5	hw	i	k	n	q	t1	u1	v	øw	Strok	Zylinder Durchmesser	R
2	6	56	12.5	5.5	27	24	27.0	65	145	16	12.5	12.5	37 - 46	12	16	94	8	90	70	62	10	42	25	M5
3	8	82	16.0	6.5	412	30	25.4	72	185	18	16.0	-	38 - 50	18	16	108	13	105	90	70	12	52	32	G 1/8
4	10	101	32.0	8.5	61	30	45.0	100	240	22	32.0	32.0	50 - 79	20	17.5	145	22	135	105	85	16	62	40	G 1/8

Kolbendurchmesser x = F5 : Notwendiges Zylinderdurchmesser für die angegebene Kraft bei 6 bar

Pneumatische Kniehebelspanner



P52 Pneumatischer Kniehebelspanner-horizontaler Zylinder

P52

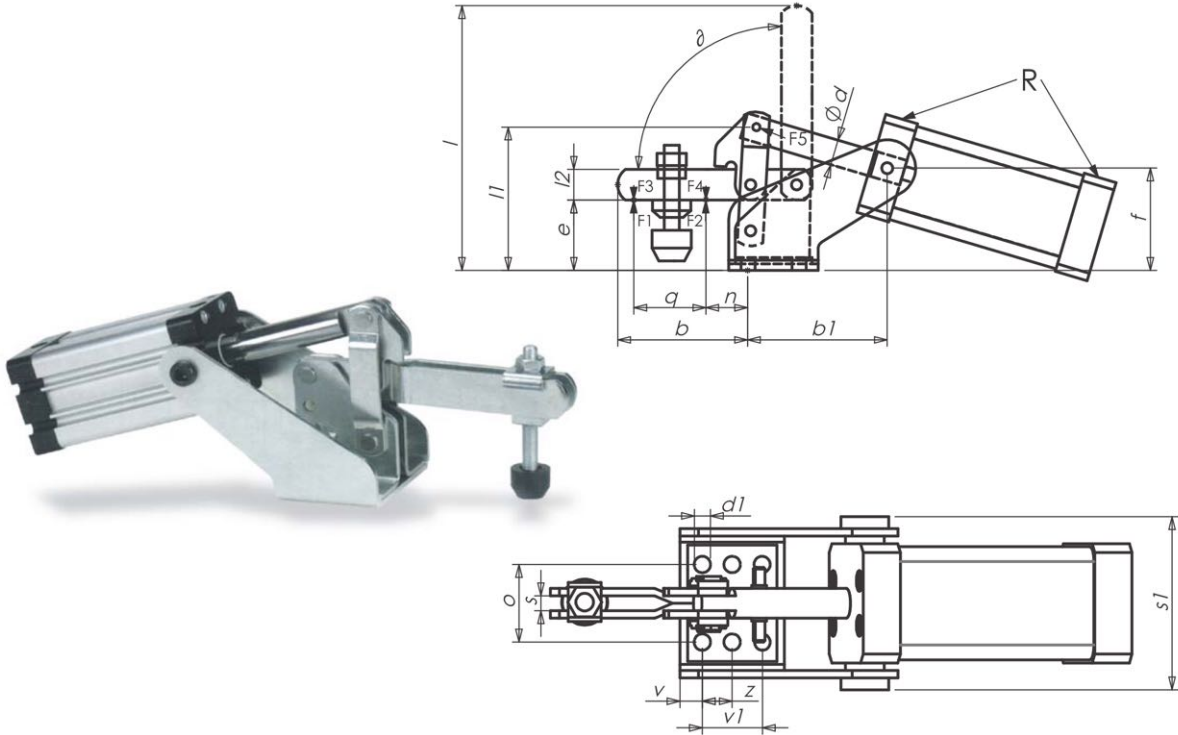
Pneumatic toggle clamps

With horizontal cylinder attachment

Fitted with pneumatic cylinder, double-acting anodised, installed and ready to connect. Magnetic piston for end-position monitoring.

With flow-restriction drillings for reduced speed. Clamps are galvanized and passivated. Stainless steel rivets running in case-hardened bushes. * Bearings are pre-lubricated.

Complete with tempered, galvanized clamping screw MS10/20 ve MS10Z



Size	F1*** (kN)	F2 (kN)	F3* (kN)	F4* (kN)	F5 (kN)	hs**				
1	0.8	1.1	0.20	0.3	0.10	0.08	52	175	M5 x 30	610
2	1.0	1.2	0.70	1.0	0.30	0.26	64	200	M6 x 35	870
3	1.4	2.5	0.65	1.1	0.50	0.35	85	250	M8 x 45	1160
4	2.0	3.0	1.50	2.2	0.75	0.80	100	290	M8 x 65	1900

*F3 + F4 = Max. Haltekraft bei 6 bar
**hs = Luftverbrauch für Doppelhub in dm3
***F1 / F2 = Haltekapazitäten

Size	b	b1	d	d1	e	f	l	l1	l2	n	o	s	s1	v	v1	z	q	∂	Strok	Kolbendurchmesser	R
1	38	58	6	4.5	22	32	100	46	10	11	27	5.5	50	8	16	-	19	90°	34	20	M5
2	51	53	12	5.5	27	41	108	57	12	10	26	6.2	62	7.5	20	10	24	90°	42	25	M5
3	80	63	12	7.1	39	56	155	75	18	27	31	8.5	70	7.5	20	-	29	90°	52	32	G1/8
4	100	86	16	8.5	51	64	200	85	20	30	41.5	8.5	84	9	20	17.5	61	90°	62	40	G1/8

Kolbendurchmesser F2 - benötigtes Kolbendurchmesser für die angegebene Haltekraft bei 6 bar

P53 Pneumatischer Kniehebelspanner-Horizontaler Zylinder

P53

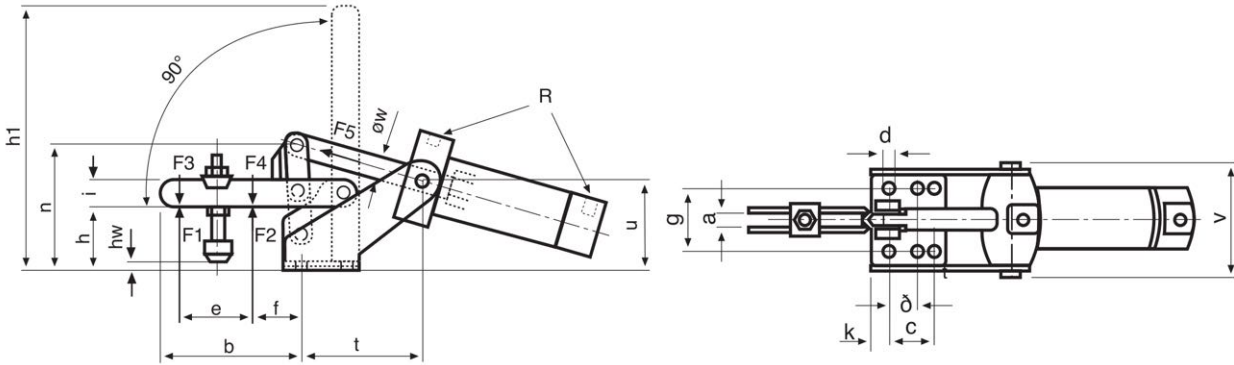
Pneumatic toggle clamps

With horizontal cylinder attachment

Fitted with pneumatic cylinder, double-acting anodised, installed and ready to connect. Magnetic piston for end-position monitoring.

With flow-restriction drillings for reduced speed. Clamps are galvanized and passivated. Stainless steel rivets running in case-hardened bushes.* Bearings are pre-lubricated.

Complete with tempered, galvanized clamping screw MS10/20 ve MS10Z



Size	F1*** (kN)	F2 (kN)	F3* (kN)	F4 (kN)	F5 (kN)	hs**				
1	0.8	1.1	0.35	0.5	0.19	0.15	55	195	M5 x 30	630
2	1.0	1.2	0.70	1.0	0.30	0.26	65	220	M6 x 35	800
3	1.4	2.5	0.65	1.1	0.50	0.35	90	250	M8 x 45	1200
4	2.0	3.0	1.50	2.2	0.75	0.80	105	320	M8 x 65	2000

*F3 + F4 = Max. Haltekraft bei 6 bar
**hs = Luftverbrauch für Doppelhub in dm3)
***F1 / F2 = Haltekapazitäten

Size	a	b	c	od	e	f	g	h	h1	hw	i	k	l	n	t	u	v	øW	Strok	Zylinder Kolbenfläche	R
1	5.5	38	16	4.5	19	11	27	22	100	-2+5	10	8	-	46	58	32	50	8	34	16	M5
2	6.2	51	20	5.3	24	10	26	27	108	-1+8	12	7.5	10	57	53	41	62	12	42	25	M5
3	8.5	80	20	7	29	27	31	39	155	2+14	18	7.5	-	75	63	56	70	12	52	32	G1/8
4	8.5	100	34.5	8.5	61	30	41.5	51	200	-5+24	20	9	17.2	85	86	64	84	16	62	40	G1/8

Kolbendurchmesser F2 - benötigtes Kolbendurchmesser für die angegebene Haltekraft bei 6 bar

Pneumatische Kniehebelspanner

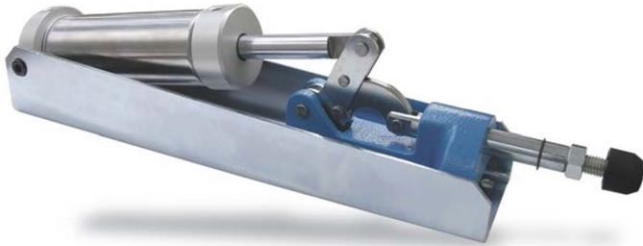


P55 Schubstangen-Pneumatikspanner

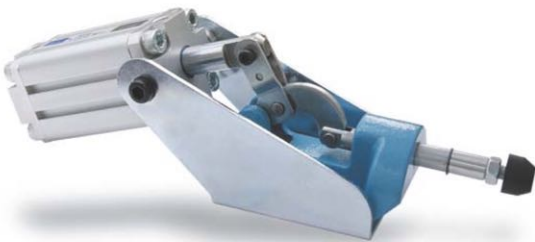
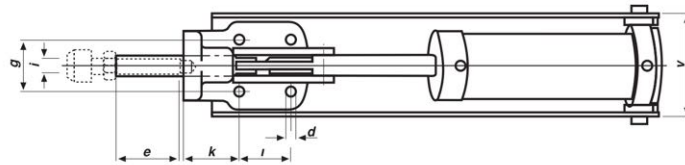
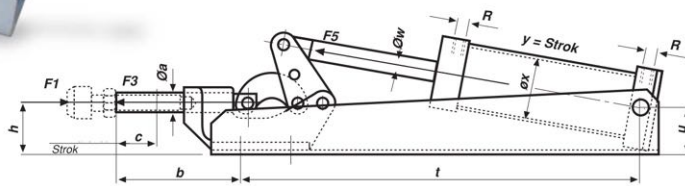
P55

Push type pneumatic toggle clamp

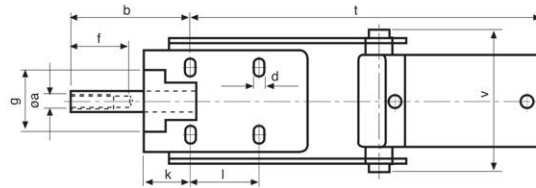
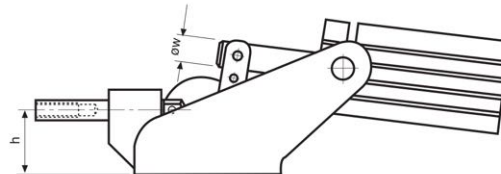
Heavy version for long working life. Fitted with double-acting pneumatic cylinder with flow-restriction drillings for reduced speed anodised, assembled and ready to connect. Materials; console galvanized and passivated, clamp body is malleable iron casting, painted. Toggle parts and push rod are heat-treated steel, galvanized and passivated. Rivet is stainless steel. Bearings are pre-lubricated.



Size : 5,7



Size : 3



Size	F1*** (kN)	F2 (kN)	F3* (kN)	hs**	[Diagram]		[Diagram]	[Diagram]
3	4.0	2.5	0.75	0.8	85	320	M8 x 35	2000
5	10.0	5.0	1.0	2.2	115	450	M12 x 50	3500
7	25.0	10	1.0	4.5	150	533	M12 x 50	7680

*F3 + F4 = Max. Haltekraft bei 6 / Max. Holding capacity at 6 bar
 **hs = Luftverbrauch pro Doppelhub bei 6 bar (dm³) / Air consumption per double stroke at 6 bar (dm³)
 ***F1 / F2 = Haltekraft

Size	øa	b	c	ød	e	f	g	h	i	k	l	t	u	v	øw	øx*	Strok y	R
3	12	70	20	6.5	30	94.5	36	35	M8	28	40	210	62	74.5	16	40	100	G 1/8
5	16	86	29	8.5	45	125	54.5	45.5	M12	45	75	334	37.5	83	16	50	100	G 1/8
7	22	105	36	11	50	125	54.5	59	M12	44	101	450	49	112	16	63	125	G 1/4

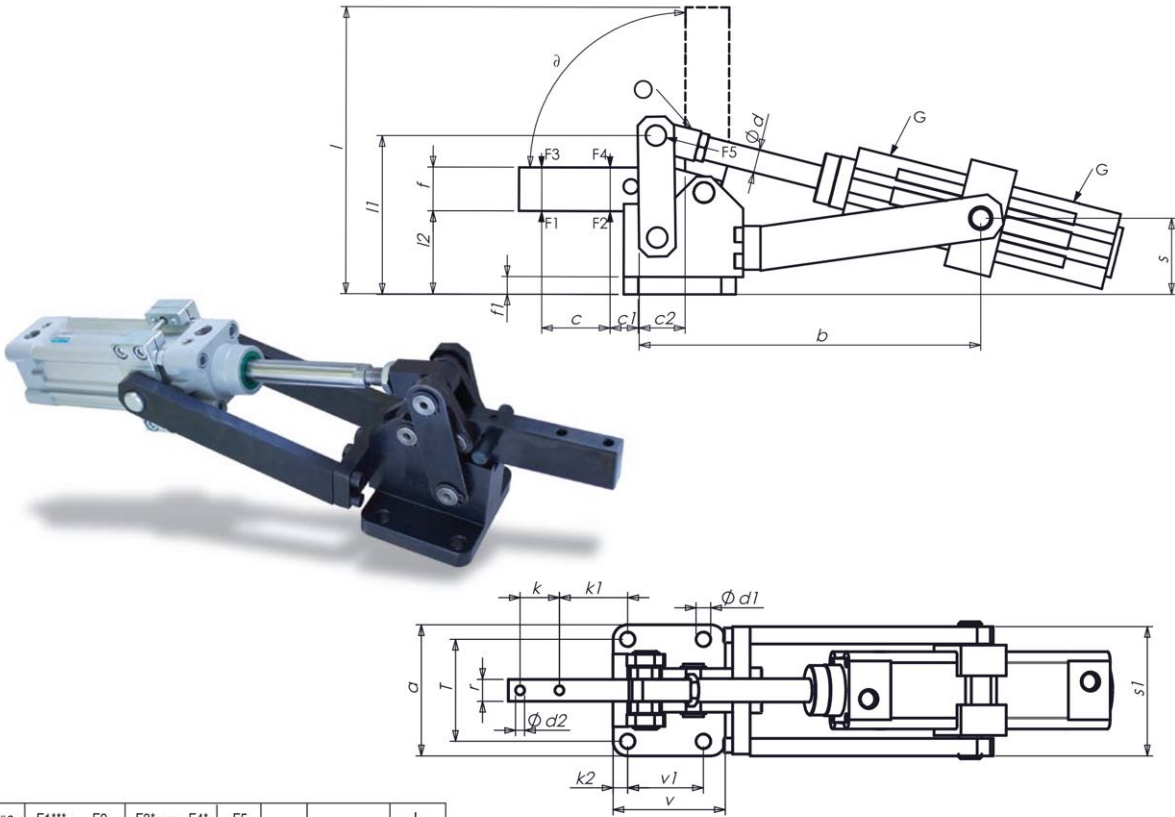
Kolbendurchmesser x = F5 : Notwendiges Zylinderdurchmesser für die angegebene Kraft bei 6 bar

P60 Schwerer Pneumatikspanner-Horizontaler Zylinder

P60

Heavy pneumatic toggle clamp

With horizontal cylinder attachment
With swivel mounting and adjustable end position cushioning.
Magnetic piston for end position monitoring.
Tempering steel, burnished.
The axle bolts running in bearing bushes are tempered, ground and locked with circlips.
Clamp is ready for installation and consists of.
Toggle clamp element P61



Größe Size	F1*** (kN)	F2 (kN)	F3* (kN)	F4* (kN)	F5 (kN)	hs**		
4	6	9	1.5	2.2	0.75	1.0	122 416	5500
6	12	18	2.5	3.5	1.00	1.8	147 480	7800
8	20	30	4.0	6.0	1.80	4.3	196 580	17800

*F3 + F4 = Max. Haltekraft bei 6 / Max. Holding capacity at 6 bar
**hs = Luftverbrauch pro Doppelhub bei 6 bar (dm³) / Air consumption per double stroke at 6 bar (dm³)
***F1 / F2 = Haltekraft

Größe/Size	a	b	c	c1	c2	d	d1	d2	f	f1	r	k	k1	k2	o	l	l1	l2	s	s1	T	v	v1	∂	Zylinder/cylinder Strok HUB	Kolben- durchmesser	G
4	90	235	54	20	32	16	11	6.2	30	12	15	27	47	10	M6	76	109	57	53	87.5	70	77	52	90°	80	40	G1/4
6	105	280	60	21	30	20	11	8.2	40	12	30	26	53	11	M8	97	129	61	55	101	83	85	55	90°	100	50	G1/4
8	135	320	95	22	47	20	13	8.7	60	12	30	40	69.5	12.5	M12x12.5	198	176	86	78	114.5	111	112.5	80	90°	120	63	G3/8

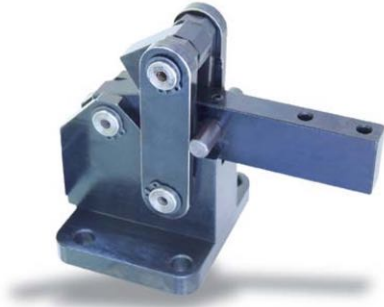
Kolbendurchmesser x = F5 : Notwendiges Zylinderdurchmesser für die angegebene Kraft bei 6 bar

P61 Mechanik-Element für Pneumatikspanner P60

P61

Toggle clamp element

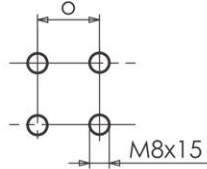
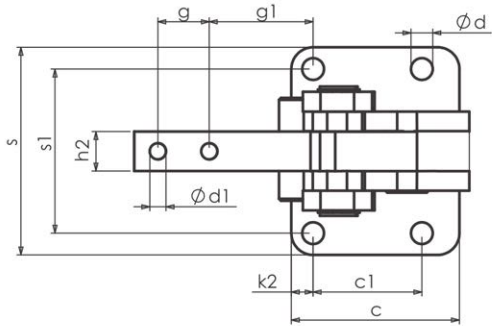
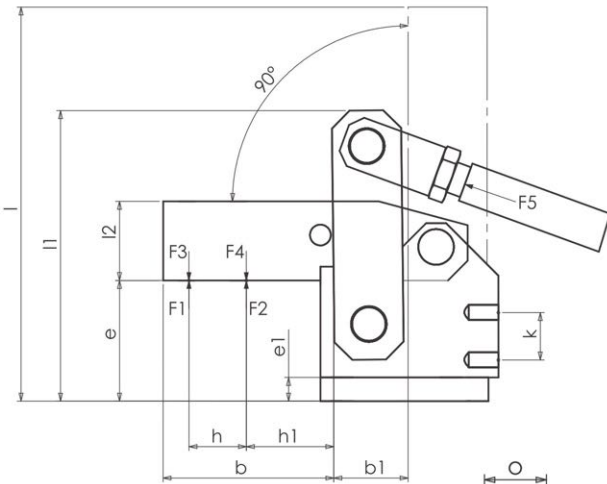
Matching with heavy pneumatic toggle clamp, with horizontal cylinder attachment P60
Tempering steel, burnished.
The axle bolts are tempered, ground and locked with circlips.
Dimension table as for P60



Größe Size	F1** (kN)	F2 (kN)	F3* (kN)	F4* (kN)	F5 (kN)			
4	6	9	1.5	2.2	0.75	122	154	2535
6	12	18	2.5	3.5	1.00	147	169.5	4215
8	20	30	4.0	6.0	1.80	196	240	10670

*F3 + F4 werden mit einem Zylinder Kolbenkraft F5 angeschlossen erreicht /
*F3+F4 can be achieved with a cylinder with the piston force F5

**F1 / F2 = Haltekraft / Holding capacity



DESETEC SPANNTECHNIK
SPANNWERKZEUGE UND NORMALIEN

Größe/Size	b	b1	c	c1	d	d1	e	e1	g	g1	h	h1	h2	k	k1	l	l1	l2	o	s	s1
4	82	32	77	52	11	6.2	57	12	27	47	54	20	15	20	10	197	122	30	18	90	70
6	90	30	85	55	11	8.2	61	12	26	53	60	22	20	24	11	215	147	40	24	105	83
8	127.5	47	112.5	80	13	13.0	86	12	40	69.5	95	24.5	30	40	12.5	306	196	60	34	136	111

P62 Schwerer Pneumatikspanner-Vertikaler Zylinder

P62

Heavy pneumatic toggle clamp

With vertical cylinder attachment

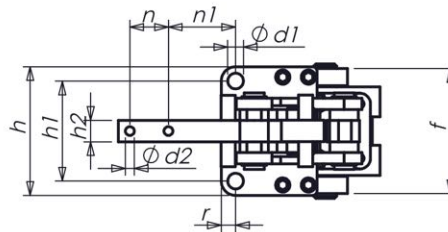
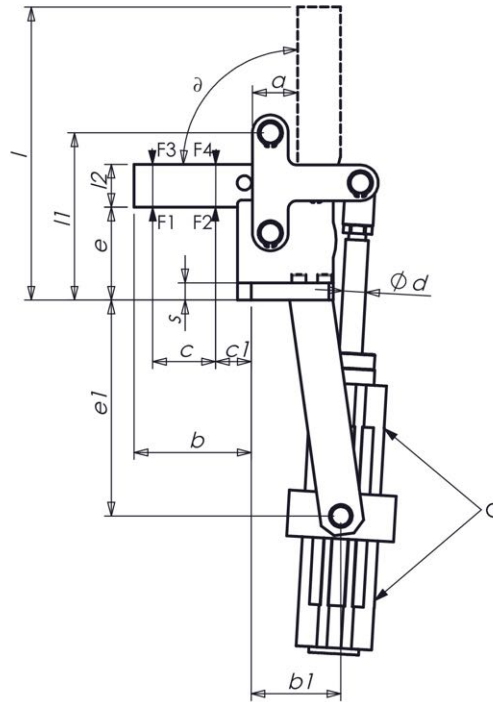
Tempering steel, burnished. The axle bolts running in bearing bushes are tempered, ground and locked with circlips.

With magnetic piston for end-position monitoring.

The clamp is ready for installation.

With double-acting pneumatic cylinder.

Toggle clamp element P63



Größe Size	F1*** (kN)	F2 (kN)	F3* (kN)	F4* (kN)	F5 (kN)	hs**			
4	6	9	1.5	2.2	0.75	1.0	172	340	5100
6	12	18	2.5	3.5	1.00	1.8	195	286	72500
8	20	30	4.0	6.0	1.80	4.3	272	470	16800

*F3 + F4 = Max. Haltekraft bei 6 / Max. Holding capacity at 6 bar
 **hs = Luftverbrauch pro Doppelhub bei 6 bar (dm³) / Air consumption per double stroke at 6 bar (dm³)
 ***F1 / F2 = Haltekraft

Größe/Size	a	b	b1	c	c1	d	d1	d2	e	e1	f	h	h1	h2	l	l1	l2	n	n1	r	s	t	u	∂	Zylinder/cylinder Stroke Kolben- durchmesser	G	
4	32	82	46	54	20	16	11	6.2	57	193	90	90	70	15	206	117	30	27	47	10	12	46	193	90°	74	40	G1/4
6	29	91	48	60	22	16	13	8.2	69	221	100	107	83	20	226	137	40	26	54	12	15	48	221	90°	87	50	G1/4
8	45	125	77	95	24.5	16	17	13.2	94	255	123	145	115	30	318	184	60	40	67	15	20	77	255	90°	120	63	G1/4

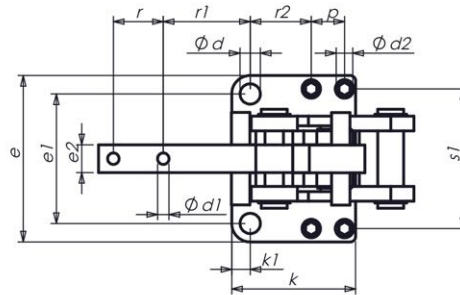
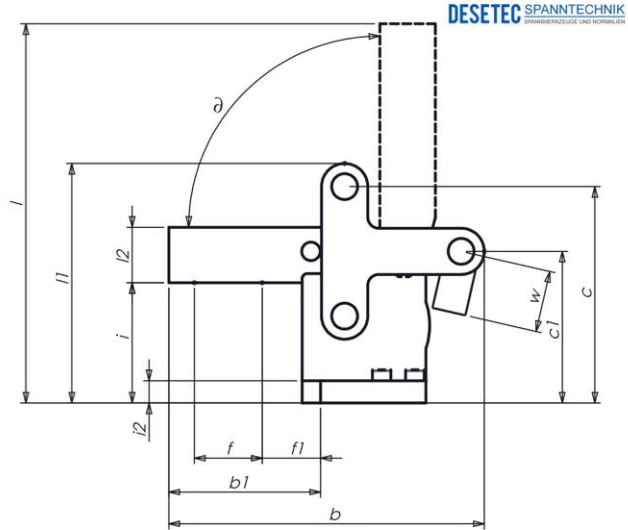
Kolbendurchmesser x = F5 : Notwendiges Zylinderdurchmesser für die angegebene Kraft bei 6 bar

P63 Mechanik-Element für Pneumatikspanner P62

P63

Toggle clamp element

Matching with heavy pneumatic toggle clamp, with horizontal cylinder attachment P62
Tempering steel, burnished.
The axle bolts are tempered, ground and locked with circlips.
Dimension table as for P62



Größe Size	F1** (kN)	F2 (kN)	F3* (kN)	F4* (kN)	F5 (kN)			
4	6	9	1.5	2.2	0.75	130	172	2400
6	12	18	2.5	3.5	1.00	155	200	4300
8	20	30	4.0	6.0	1.80	204	265	11000

*F3 + F4 werden mit einem Zylinder Kolbenkraft F5 angeschlossen erreicht /
*F3+F4 can be achieved with a cylinder with the piston force F5

**F1 / F2 = Haltekraft / Holding capacity

Größe/Size	b	b1	c	c1	d	d1	d2	e	e1	e2	f	f1	i	il	k	k1	l	l1	l2	p	r	r1	r2	s	w	alpha
4	172	82	117	82	11	6.2	6.5	90	70	15	54	20	65	12	67	10	206	130	30	18	27	47	33	75.5	29.5	90°
6	200	91	137	92	13	8.2	6.5	107	83	20	60	22	69	15	73.5	12	226	155	40	24	26	54	29.5	87.5	37	90°
8	265	125	184	124	13	13.2	6.5	145	115	30	95	24.5	94	20	109	15	318	204	60	40	40	67	44	102.5	32	90°