

P20 Pneumatischer Schwenkspanner, Blockversion

P20

Pneumatic swing toggle clamp - Block version - Double acting

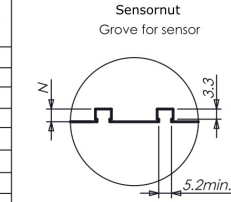
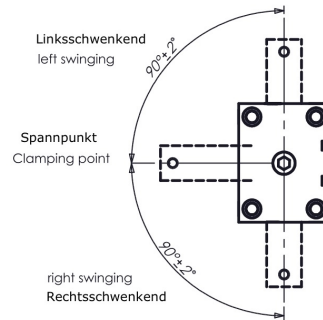
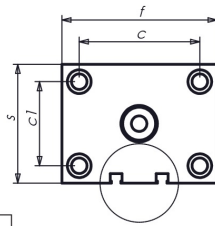
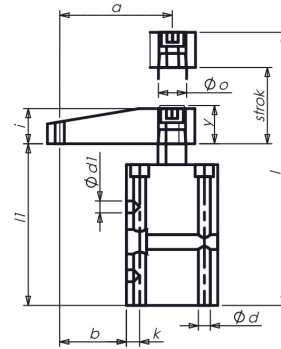
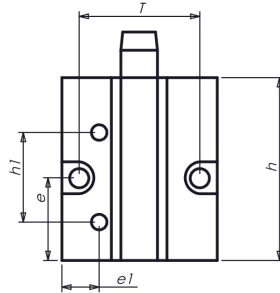
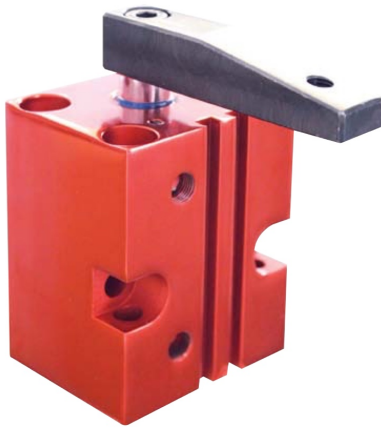
For recessed installation in fixtures.

Both compressed-air connections are in the flange.

Piston rod non-rusting, polished.

Body is made of aluminium, anodised.HART-COAT® surface for wear-resistance.

Including screw and spring washer for simple setting of the clamp arm position.

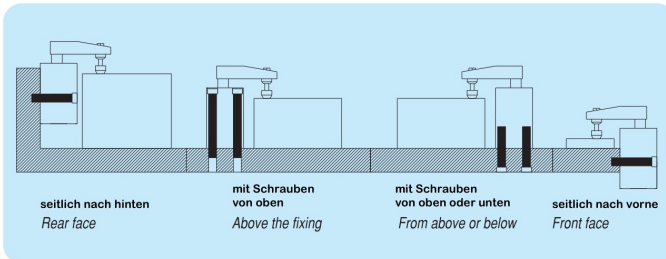


Größe Size	rechtschwenkend Right swinging	linksschwenkend Left swinging	F3 (kN)	Anschlussgewinde für Andrückschraube Clamping Screw	g
32	✓	-	0.27	M8	800
32	-	✓	0.27	M8	800
40	✓	-	0.45	M8	920
40	-	✓	0.40	M8	920
50	✓	-	0.70	M12	1000
50	-	✓	0.70	M12	1000
63	✓	-	1.10	M12	1150
63	-	✓	1.10	M12	1150

DESETEC SPANNTECHNIK
SPANNWERKZEUGE UND NORMALIEN

Größe/Size	a	b	c	c1	ød	ød1	e	e1	f	h	h1	i	k	l	l1	n	øO	s	T	Piston ø	Spannen Clamp ^o - y	Strok
32	60	40	45	30	M8	8.5	43	12	60	90	50	20	7.5	145	96	6.5	16	45	45	32	15	30
40	70	45.5	52	37	M10	8.5	40	22	70	90	52	19	9	145	96	8	16	55	52	40	15	30
50	80	49	66	46	M10	10.5	45	66	85	100	53.5	25	9.5	162	106	6.5	16	65	66	50	15	30
63	90	52.5	80	60	M12	10.5	36	30	100	100	53	25	10	162	106	8.5	20	80	80	63	15	31

* Der Spanner darf nur innerhalb des Spannhubs Y belastet werden / Swing clamps may only be loaded during the clamping stroke "Y"



fitting and removing clamping arm



Fitting clamping arm
Hold clamping arm with spanner. Tighten /loosen screw
Removing clamping arm
Loosen clamping arm from piston rod.
Caution : Do not strike sides of clamping arm.